

CERTIFICATE OF LOCATION OF GOVERNMENT CORNER

EAST QUARTER _____ Corner of Section 2 , Township 107N , Range 39W

5th Principal Meridian, State of Minnesota, County of MURRAY

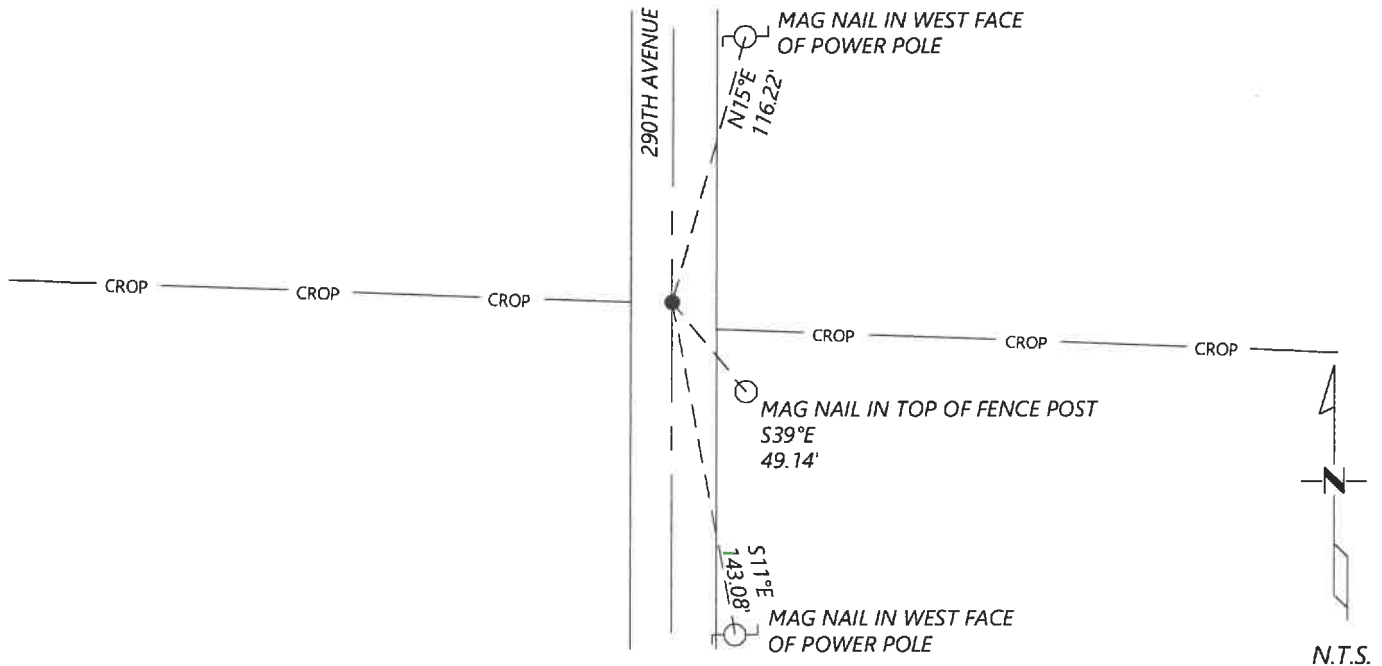
At the corner location shown on the sketch:

On 8/27/2020 found a NO. 4 REBAR WITH BROKEN WHITE CAP. DOWN 0.3FT
DATE

left monument as found lowered monument removed monument (explain)

On _____ placed a _____
DATE

SKETCH OF REFERENCE TIES



Statement of evidence for this corner location is on back of this page.

I hereby certify that this document was researched and prepared by me or under my direct supervision and that I am a licensed Land Surveyor under the laws of the State of Minnesota.

Signature [Handwritten Signature]

Date 6/16/2021 License No. 45874

Title:

- Land Surveyor Professional Engineer
- County Surveyor County Engineer

OFFICE OF THE COUNTY RECORDER

County of Murray

I hereby certify that this document was filed in the Co.

Recorder's office at _____ M. on the _____ day of _____ A.D. 20 _____

County Recorder Karen Brown
by JUN 22 2021, Deputy

DOCUMENT NO. _____

Statement of Evidence:

East Quarter Corner of Section 2, Township 107 North, Range 39 West, 5th Principal Meridian, Murray County, Minnesota.

1861 July, GLO Notes: Set post in mound.

1899 October, Survey record for Section 1 shows a stone at the corner.

1940 Survey record for Section 1 shows a concrete stone at the corner.'

Tack in cor. fence post	NW	46.7ft
-------------------------	----	--------

Tack in cor. fence post	NE	51.3ft
-------------------------	----	--------

2012 December, A survey in Section 2 by Perry Zieske shows a found iron monument at the corner.

2020 September, Westwood Professional Services searched and found a No. 4 rebar with broken white cap. Position appears to fit the location indicated by the 2012 Zieske survey. I accepted the found monument and set reference ties.

Analysis of the recovered data, field evidence and survey measurements, indicates that the monument found is the correct perpetuation of this corner. For additional information concerning this corner please contact Westwood Professional Services.